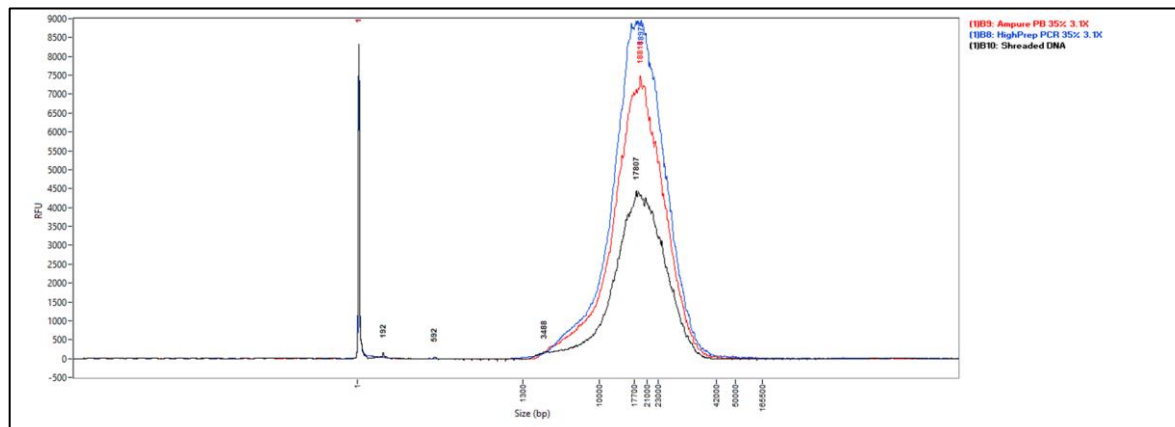


# AMPure PB vs HighPrep PCR PB

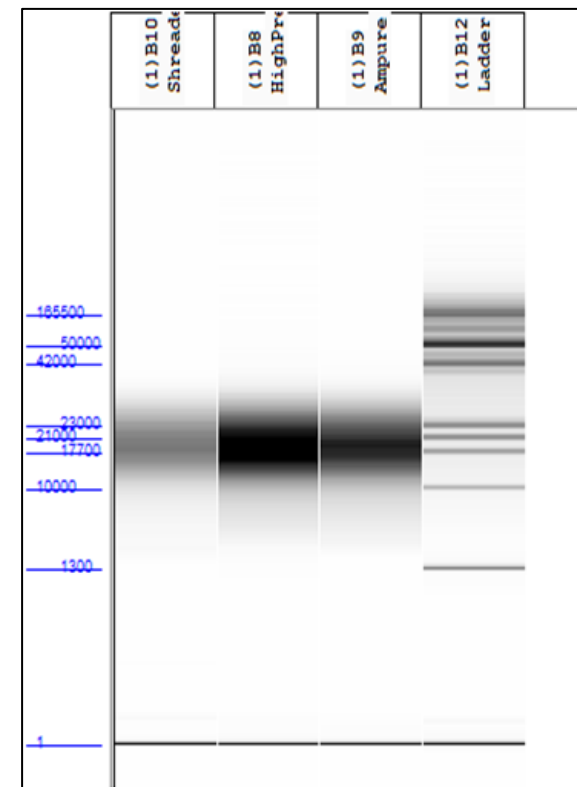
---

COMPARATIVE DATA

# Size Selection of >10 kb Fragments (DNA concentration of 10 ng/ul) – AMPure PB vs HighPrep PCR PB



Well	Sample ID	Range	ng/uL	% Total	nmole/L	Avg. Size	%CV	Size Threshold (b.p.)	DQN
B8	HighPrep PCR PB 3.1x	10000 bp to 60000 bp	0.3302	88.9	0.028	19380	27.44	300	10
B9	Ampure PB 3.1x	10000 bp to 60000 bp	0.269	88.6	0.0229	19314	26.69	300	10
B10	Shredded DNA	10000 bp to 60000 bp	0.1738	89.7	0.0147	19446	25.88	300	9.9
B12	Ladder								



Size selection was performed from DNA concentration of 10 ng/μL

# HighPrep PB performance vs. AMPure PB DNA clean up and Library Selection

Sample	Bases	Reads	Mean	N50
HighPrep PCR PB	12,042,073,795	764,841	15,744.5	16,482
AMPure PB	14,775,547,973	1,312,761	11,255.3	13,655

HiFi Read Statistics: Higher N50 means Longer reads than Ampure PB

Sample	Mean per read GC content	SD per Read GC Content
HighPrep PCR PB	40.36%	5.6%
AMPure PB clean-up & library selection	40.29%	5.52%

GC Bias Analysis

**HighPrep PCR PB allows better clean up of fragments > 10 kb**